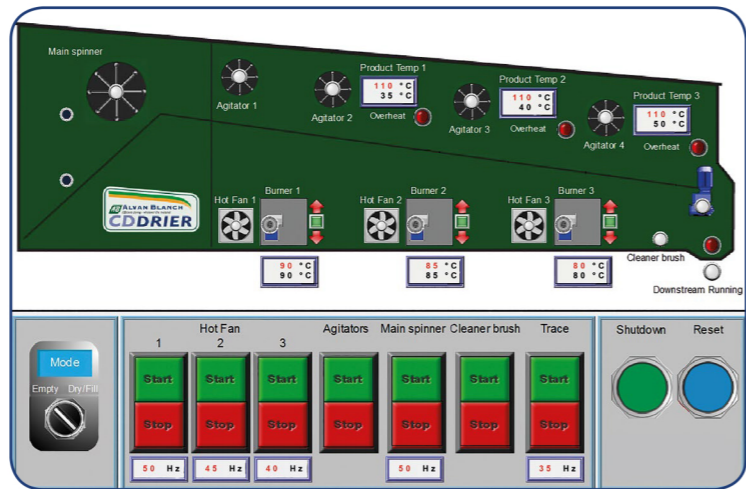




Versatile Control Systems

Fully integrated control systems for enhanced management control. PLC systems incorporate large touch screen, data recording, energy monitoring and remote access/control. Variable speed drives for optimal drying and energy efficiency.



PLC Control Panel with Data Recording

An Example of the Products Dried		
Alfalfa	Grass Seed	Paper Sludge
Barley	Herbs	Pellets
Borage	Linseed	Rape Seed
Bread Crumbs	Lucerne	RDF
Bagasse	Malted Sorghum	Rice
Cocoa Beans	MSW	Seaweed
Coffee Beans	Maize	Sunflower
Compost	Maize Silage	Soya Beans
Cotton Seed	Oats	Sugar Beet Pulp
Chilli Peppers	Plastics	Straw
Digestate	Poppy Seeds	Wheat
Evening Primrose	Peas and Beans	Woodchip
Grass	Potato Peelings	Wood Shavings

Established Manufacturer

As an established manufacturer for over 60 years, we apply first class customer service and leading edge designs. All our driers are designed and manufactured in our 9,000 m² UK factory, where we guarantee ongoing parts availability for all our driers.

Model	Drying at 70 °C. Digestate 70% -15% MC		Drying at 70 °C. Woodchip 50% -15% MC		Drying at 90 °C. Grain 20% -15% MC		Electrical Power, kW (approx.)	Dimensions (approx.)			
	Throughput Capacity kg/h (approx.)	Thermal Power kWth (approx.)	Throughput Capacity kg/h (approx.)	Thermal Power kWth (approx.)	Throughput Capacity kg/h (approx.)	Thermal Power kWth (approx.)		Max. Length (m)	Drier Width (m)	Overall Width (m)	Max. Height (m)
CD3100	190	140	300	140	2,860	180	14	10	2.0	5.1	4.0
CD4300	260	190	410	190	3,700	250	19	12.5	2.0	5.1	4.0
CD5700	350	250	550	250	4,940	340	19	12.5	2.6	5.7	4.0
CD7900	510	370	810	370	6,370	500	26	15	2.6	5.7	4.0
CD10600	670	480	1,060	480	9,240	650	35	17.5	2.6	5.7	4.0
CD13300	880	630	1,380	630	11,550	860	43	17.5	3.2	6.5	4.0
CD16000	1,080	770	1,700	770	13,340	1,050	52	21	3.2	7.0	4.8
CD19400	1,250	890	1,960	890	16,930	1,210	57	23.5	3.2	7.0	4.8
CD22200	1,490	1,060	2,330	1,060	18,720	1,440	65	26	3.2	6.5	4.8
CD25600	1,680	1,200	2,650	1,200	22,300	1,630	82	28.5	3.2	6.5	4.8
CD28400	1,850	1,320	2,910	1,320	24,100	1,790	87	32	3.2	6.5	5.4
CD31100	2,050	1,460	3,220	1,460	27,680	1,990	87	34.5	3.2	7.0	5.4
CD34600	2,290	1,630	3,600	1,630	29,470	2,200	131	37	3.2	7.0	5.4
CD38000	2,450	1,750	3,850	1,750	33,060	2,380	133	39.5	3.2	7.0	5.4
CD44200	2,890	2,060	4,540	2,060	38,450	2,810	187	46	3.2	7.0	6.3
CD50300	3,250	2,320	5,110	2,320	43,760	3,160	200	50.6	3.2	7.0	6.3
CD60400	3,910	2,780	6,140	2,780	52,540	3,790	244	50.6	3.2	7.5	6.3

Throughput, thermal and electrical power values are approximate and will vary depending on ambient conditions, product variation and drier set up. (Overall width includes larger footprint of externally mounted fans).

CONVEYOR DRIER



- **Uniquely versatile** -
Handles most materials in any condition
- **Low temperature system** -
Preserves colour/quality & reduces risk
- **Heat sources** -
Multiple heat sources can be used
- **Fuel efficient** -
With recovery of exhaust air from final sections
- **Precise flow consistency** -
Mechanical flow via variable speed drive
- **Inbuilt reliability** -
Backed by 2 year warranty and worldwide support